

N24 Cahir to Limerick Junction Project



Introduction

Tipperary County Council, in partnership with Limerick City and County Council, Transport Infrastructure Ireland and the Department of Transport are progressing the N24 Cahir to Limerick Junction Project. The overall aim of the N24 project is to deliver a reliable and sustainable transport solution that will encourage balanced regional development and improve the quality of life of residents along this corridor.

Project Progress Update

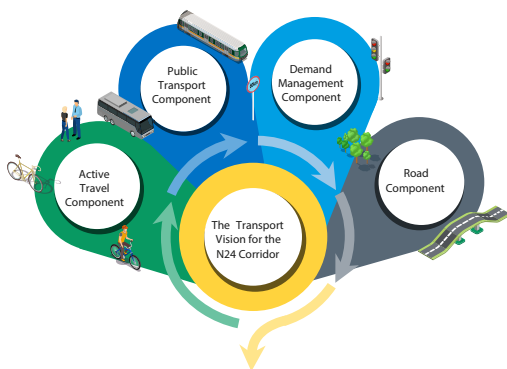
The Preferred Transport Solution was on Public Display in May 2022. A copy of all of the display material presented is available view on the project website at www.N24cahirlimerick.ie

The Preferred Transport Solution is an integrated transport solution that includes active travel measures for walking and cycling, improvements to public transport, demand management measures along with new and improved road infrastructure for the communities along the N24 transport corridor from west of Brooks Bridge in County Limerick to Cahir in County Tipperary. It has been developed in line with the hierarchy of mode which seeks to prioritise active travel modes such as walking and cycling, followed by public transport over the use of private vehicles. The Preferred Transport Solution has also been developed incrementally in line with the hierarchy of intervention which seeks to make the best use of the existing asset through maintenance, optimisation, and improvement before the construction of new infrastructure.

The Option Selection Report is currently going through a final review and it is due to be published in Q4 2022. This report will be made available on the project website (www.n24cahirlimerick.ie). The Option Selection Report contains all of the supporting detail behind each step in the analysis during Phase 2, documenting both the assessments undertaken and the decisions made.

The Transport Vision for the N24 Corridor

All elements of transport working together...



...to achieve an integrated sustainable solution.

In parallel to the finalisation of the Option Selection Report, Phase 3, Design and Environmental Evaluation, of the project has commenced and it is expected to submit a planning application to An Bord Pleanála for the project in Q3 2024 as per programme. The purpose of this phase is to develop the design of the Preferred Transport Solution identified in Phase 2 and undertake an environmental evaluation of the design to a sufficient level of detail to establish landtake requirements and to progress the project through the statutory process.

What Happens Next

As part of the Design and Environmental Evaluation stage of the project a number of field surveys, including environmental, topographical and hydrographical surveys will be undertaken in the coming months within an area which includes, but is not limited to, the corridor for the road component for the Preferred Transport Solution. These field surveys are key to assessing the environmental constraints of the survey area and will provide data to inform the Environmental Impact Assessment for the proposed project. Those who have lands within the area to be surveyed have been issued a letter to explain these surveys.



The project team continues to be available to answer any questions and you can book an online or in person meeting with a member of the project team through the online booking facility on the project website www.N24cahirlimerick.ie or by phoning **061 951000**.

