

# N24 Cahir to Limerick Junction & Oola Transport Project



**N24 Cahir to Limerick Junction & Oola Transport Project**

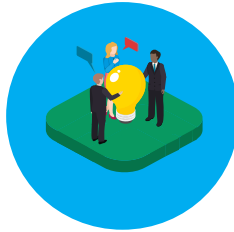


## Introduction

Tipperary County Council, in partnership with Limerick City and County Council, Transport Infrastructure Ireland and the Department of Transport are progressing the N24 Cahir to Limerick Junction & Oola Transport Project. The overall aim of the Project is to deliver a reliable and sustainable transport solution that will encourage balanced regional development and improve the quality of life of residents along this corridor.

## Project Progress Update

Following the publication of Design Update No. 3 in May 2025 the project team have been progressing the design of the active travel and road components for the Project to take on board feedback received during the display and subsequent meetings with landowners and other key stakeholders.



The archaeological slit trench testing undertaken at targeted locations across the Project is now complete.

The project team are also progressing the preparation of the Environmental Impact Assessment Report (EIAR), Natura Impact Statement and compulsory purchase documentation.

## What Happens Next

The design will be finalised and the planning documentation which includes the Environmental Impact Assessment Report (EIAR), Natura Impact Statement (NIS) and compulsory purchase documentation are being prepared.



The project team continue to be available to discuss the design and are available for in-person meetings or site visits. You can book a meeting with a member of the project team through the online booking facility on the project website [www.n24cahirlimerick.ie](http://www.n24cahirlimerick.ie) or by phoning **061 951000**.

Updates, news and details of future public displays will be published on the project website.

